

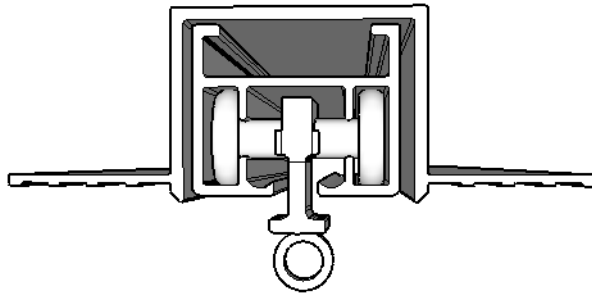
Perfect Fit Drapery Track Cavity Instructions

Congratulations on your purchase of a specialty system from DEL Motorized Solutions.

If you have any questions, please call technical support at 1-866-446-6867

or email us at info@motorizedsolutions.com

PerfectFit

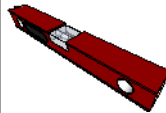


Important Notes - Please Read Before Installing



CAUTION: RISK OF FALLING OBJECTS

Securely install the system per the mounting instructions. Failure to do so could result in injury.



All mounting surfaces must be level.



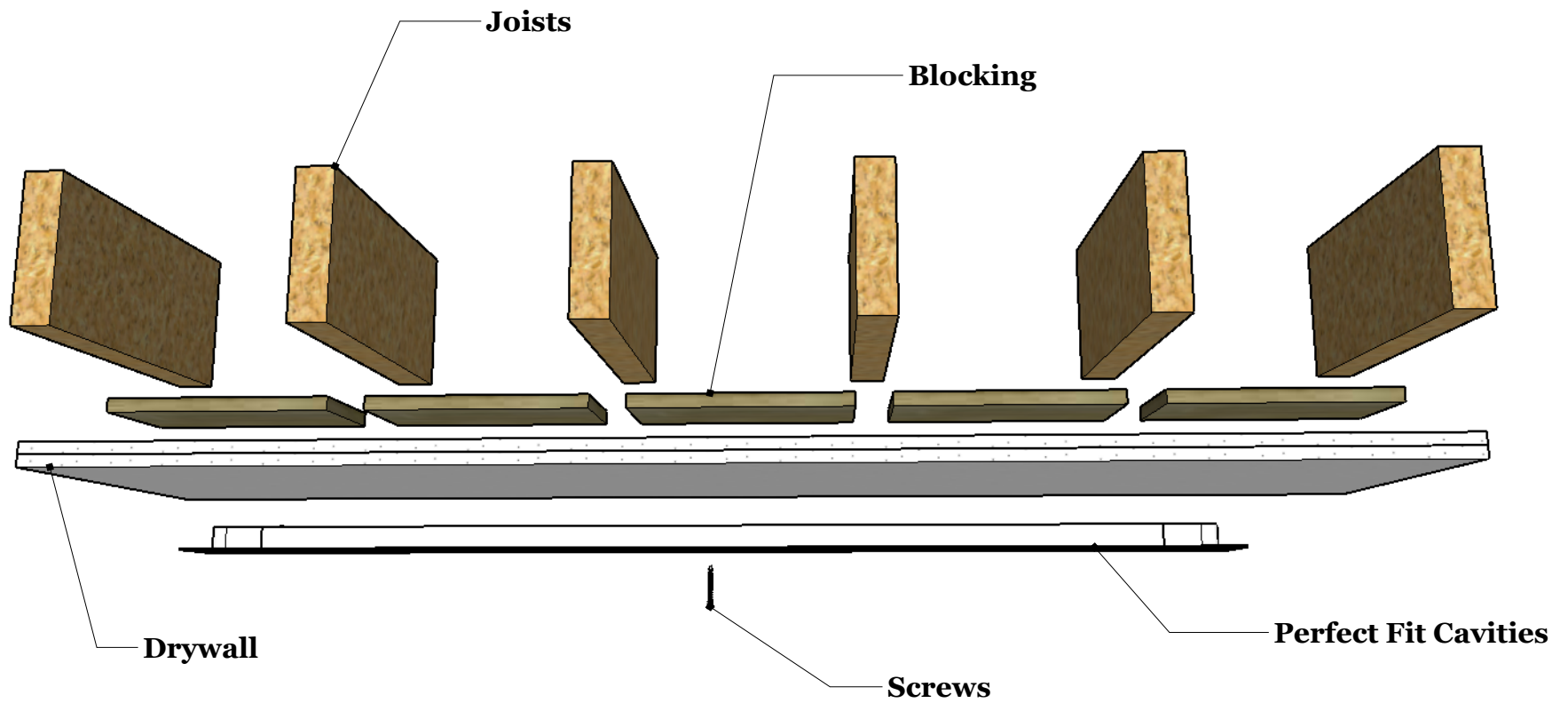
Perfect Fit and hardware are to be anchored into wood blocking. If wood blocking is not available, you must use appropriate fasteners (not included) to support the weight of the system and load.



Pre-drill all holes with the appropriate size bit.

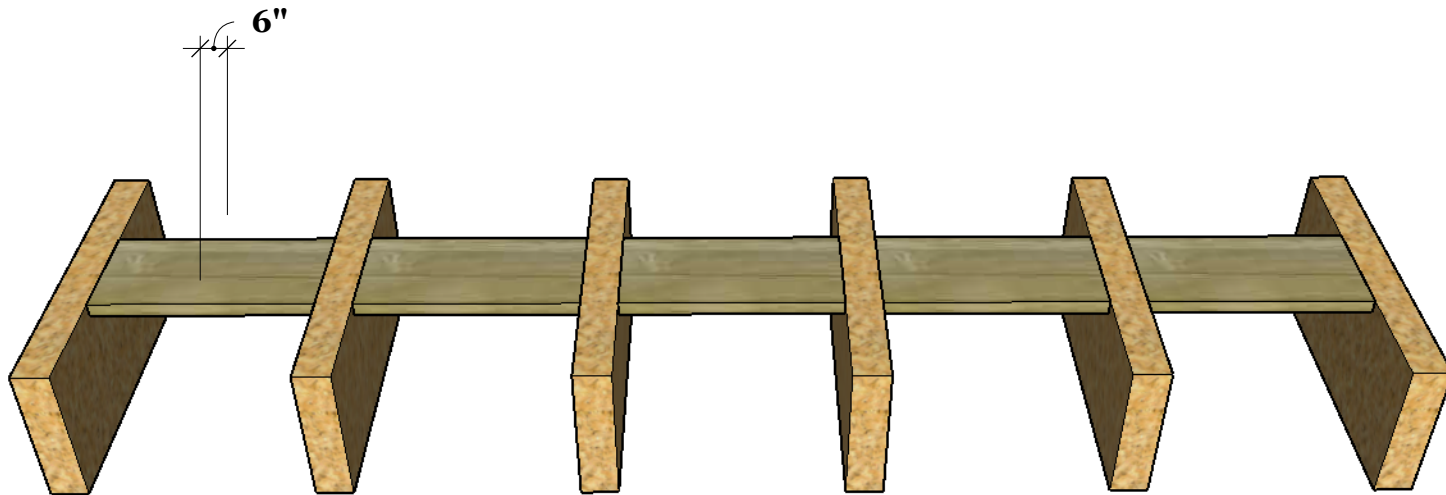
TOOLS REQUIRED

Pencil, Tape Measure, Powered Screwdriver, Drill, Level, Rasp, Drill bits.



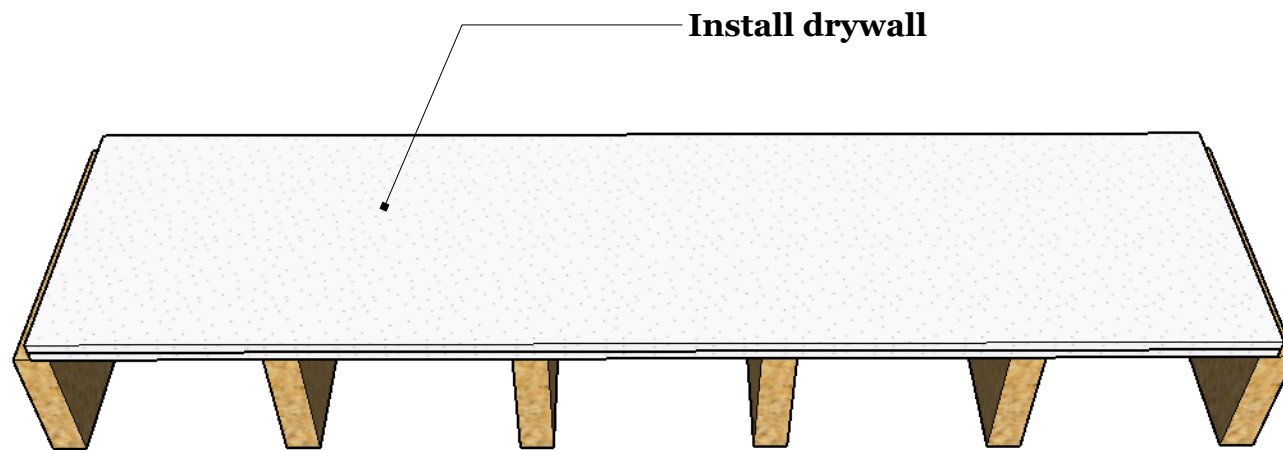
Step 1 - Blocking

Insert blocking between the joists. Blocking and anchors to be strong enough to support the weight of the Perfect Fit cavity, the drapery track, and the drapery.



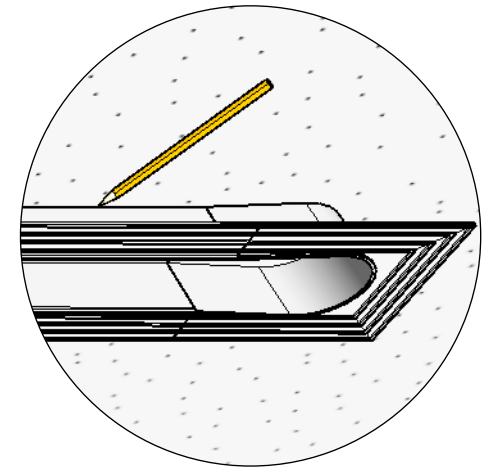
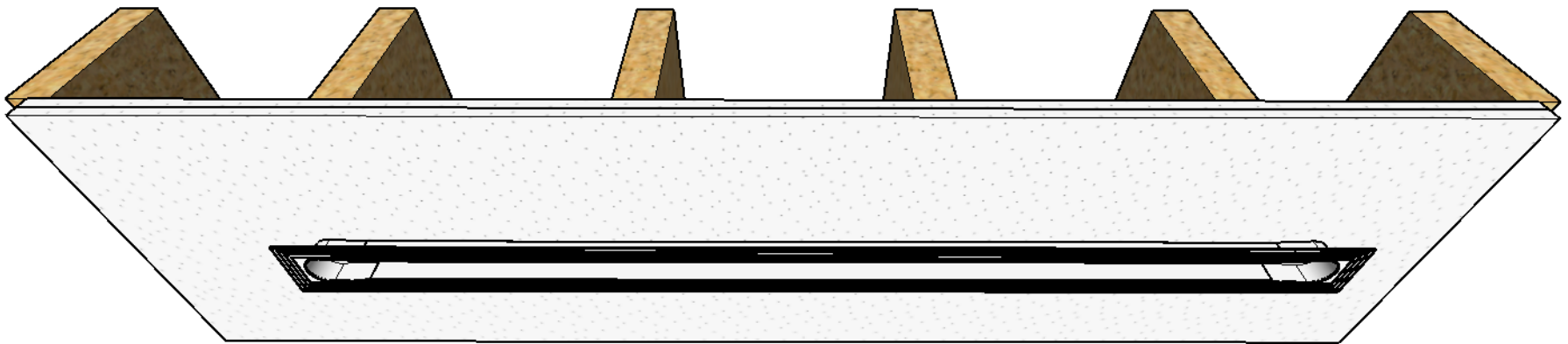
Step 2 - Drywall

Install the drywall over the joists.



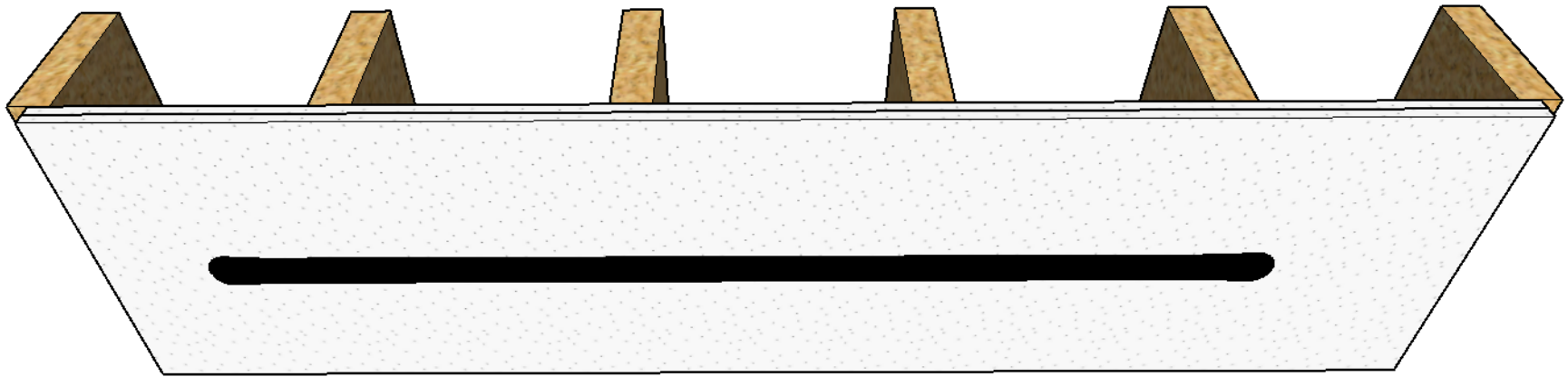
Step 3 - Tracing The Profile

Place the Perfect Fit cavity on the ceiling. Use temporary screws to tack it in place. Trace the profile using a pencil. Refer to your drapery workroom and or track manufacturer's specifications for stack and clearance requirements.

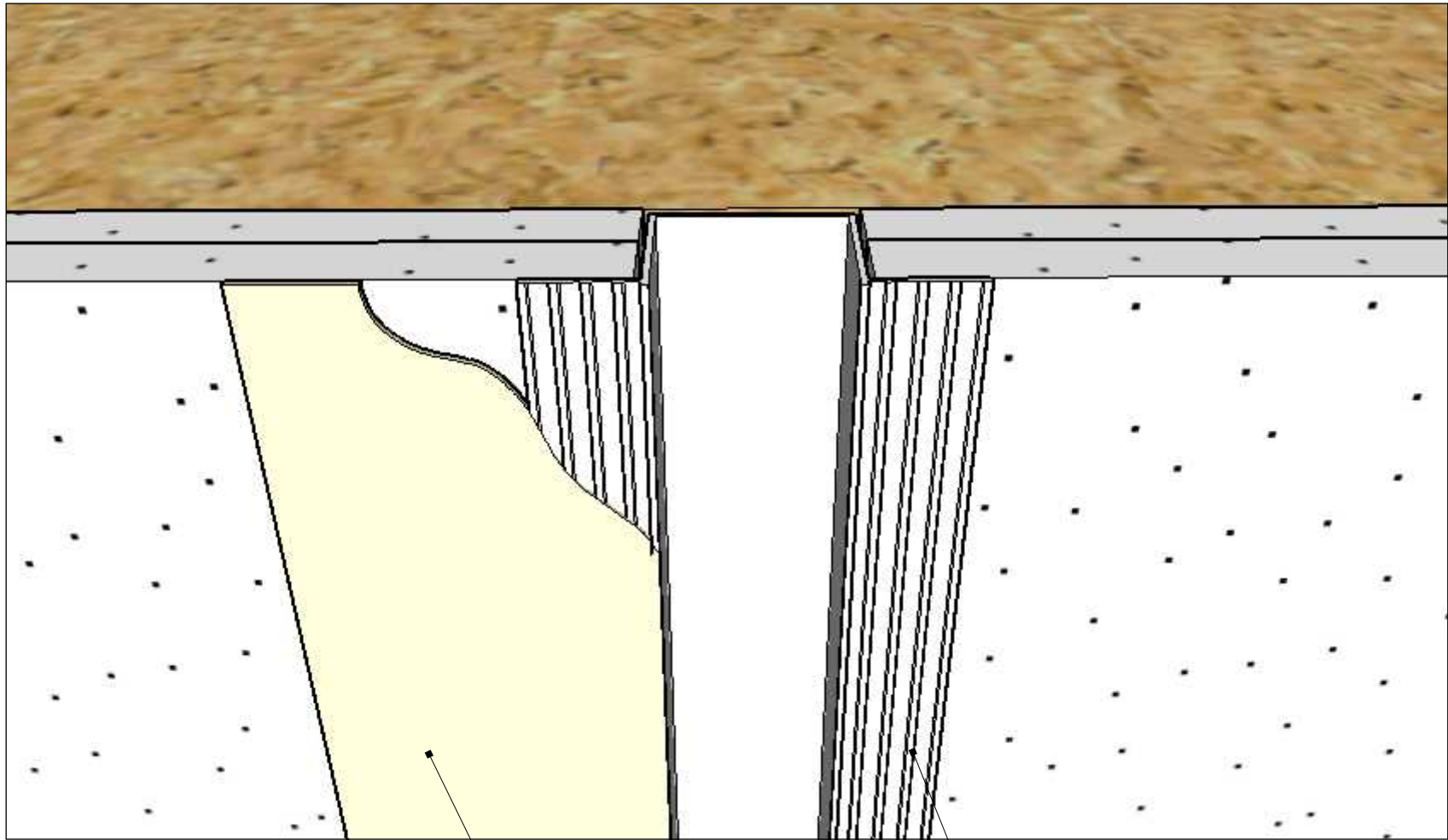


Step 4 - Cutting The Hole

Cut the drywall at the traced line.



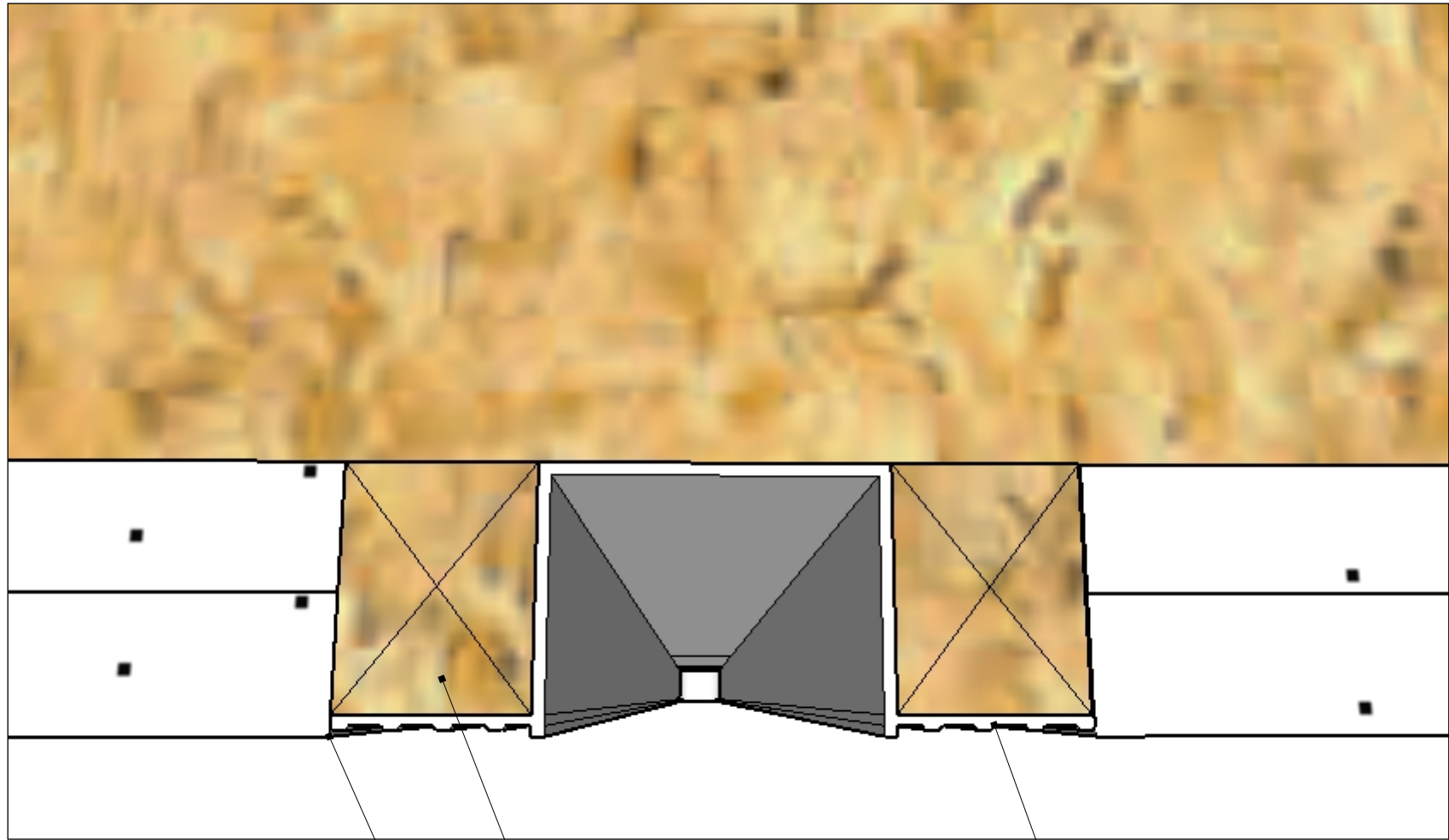
Step 5 Option 1



When mudding use
a 10" trowel.

Mud flang placed on top of drywall.

Step 5 Option 2



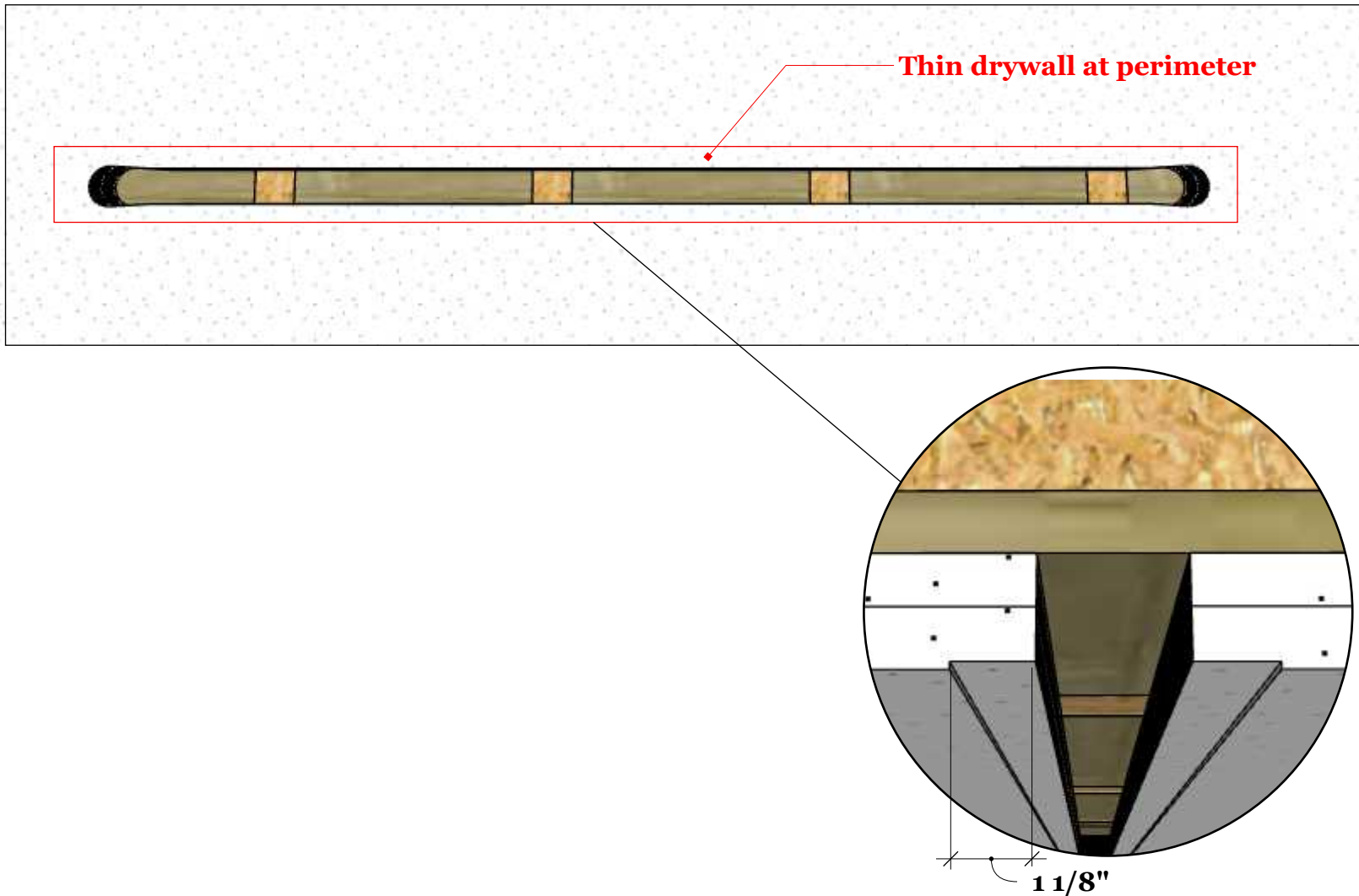
Drywall butt to mud flange.

Blocking spaced along length
to support mud flanges.

Flange level with drywall plane.

Step 5 - Thin The Edges

Thin the drywall in the area to receive the Perfect Fit Cavity so that the mud flanges will be flush with the ceiling once mud in.



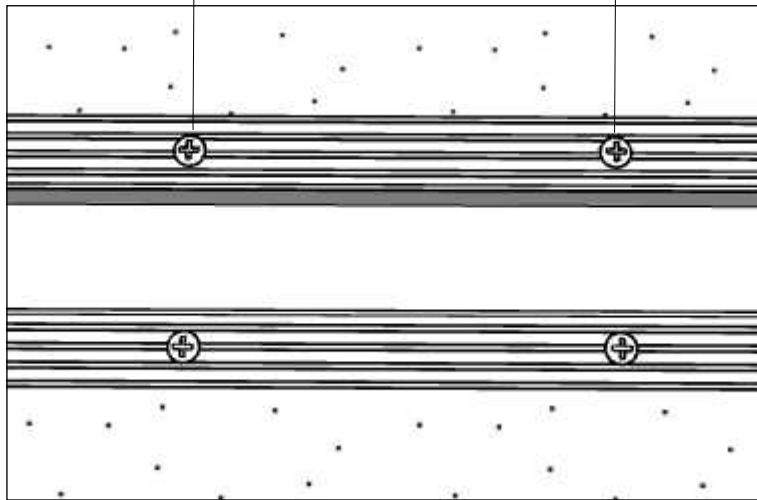
Step 6 - Install The Cavity

Drill holes and insert screw anchors



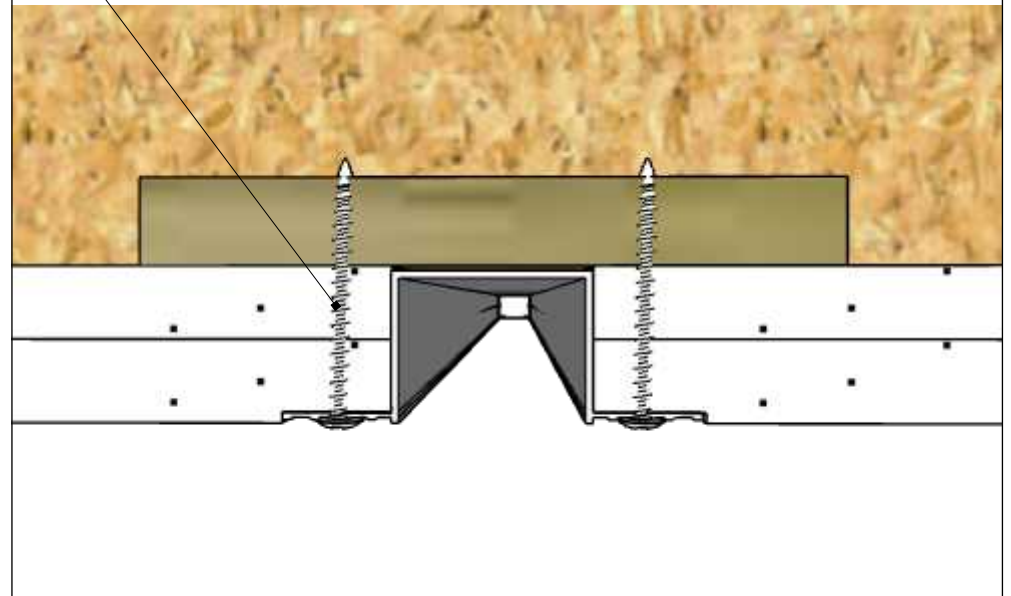
Insert Perfect Fit in hole

Spaced as required to support weight

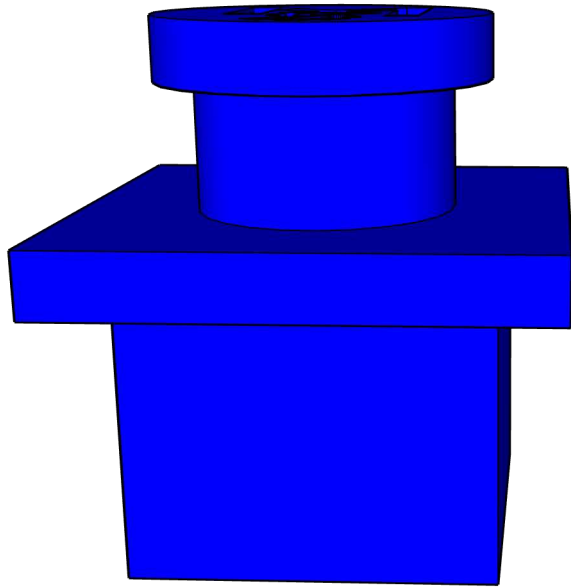


Note: To avoid risk of cracking or warping the motor and idle ends, do not over tighten the screws.

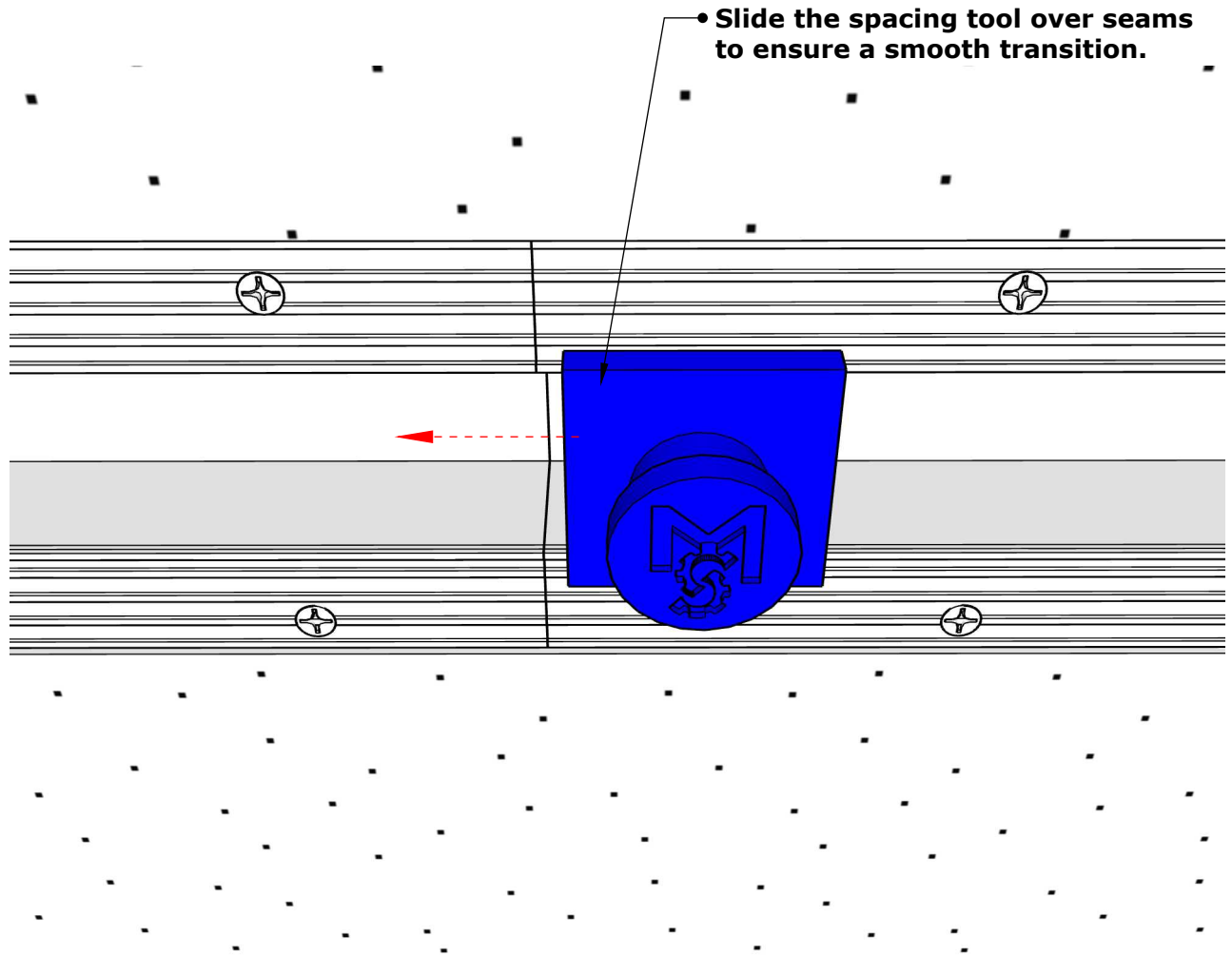
Anchors must be long enough to penetrate through the wood blocking



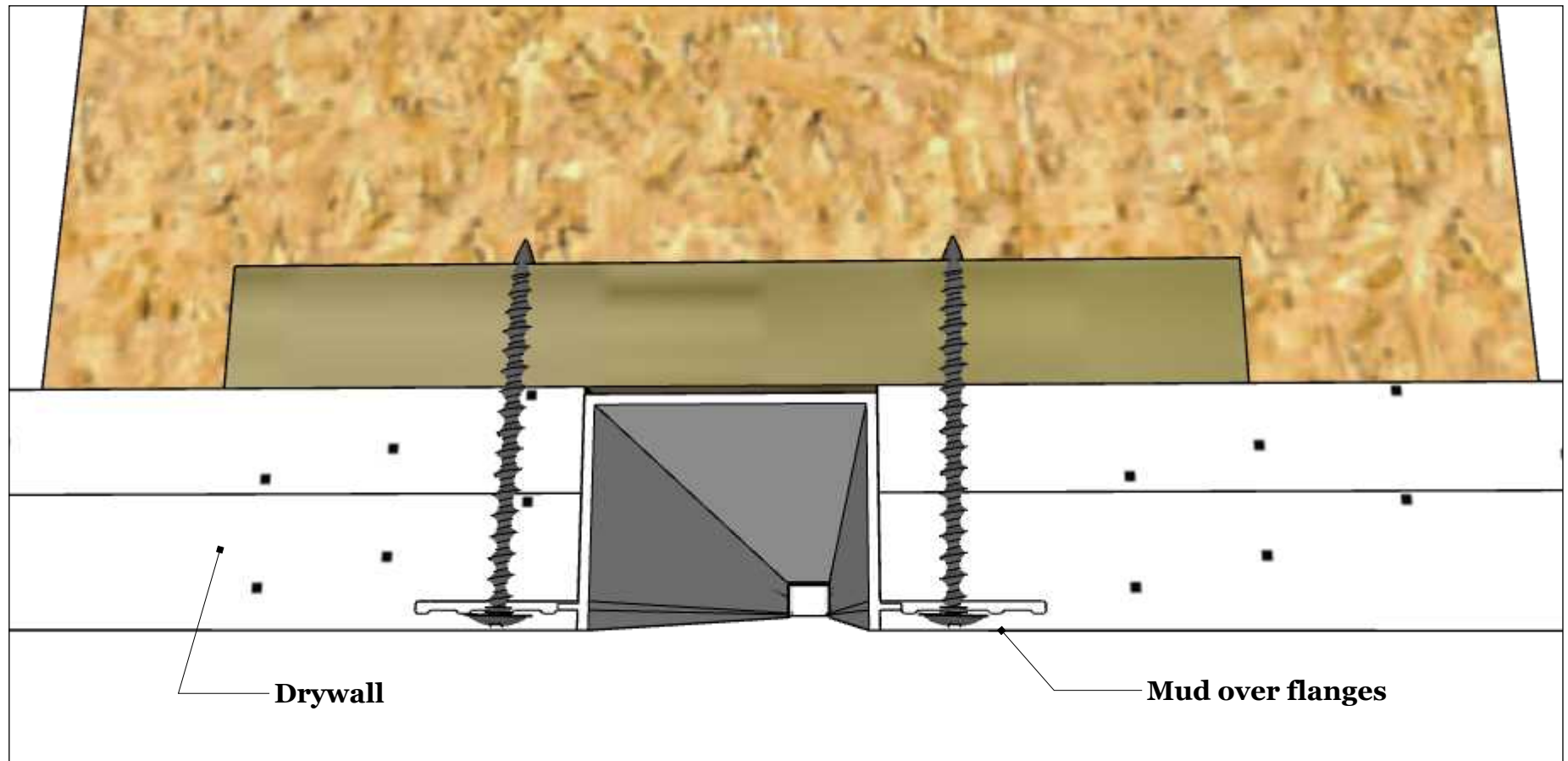
Step 6A - Test the Seams



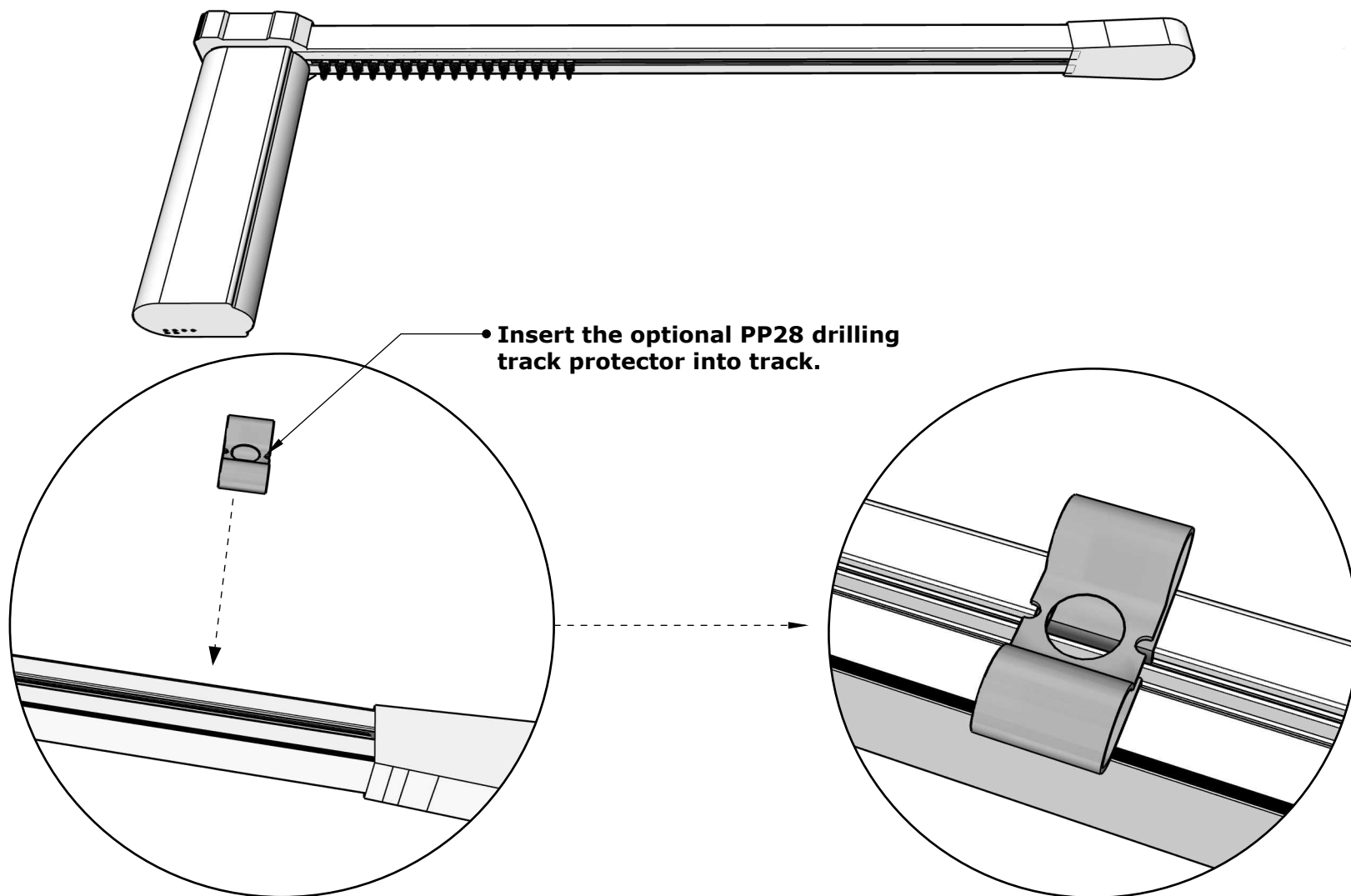
Optional Spacing Tool



Step 7 - Complete The Finish



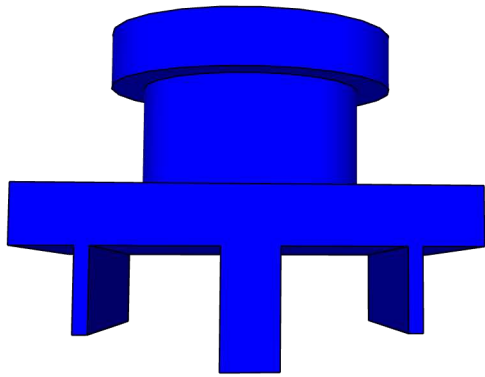
Step 8 - Install The Track



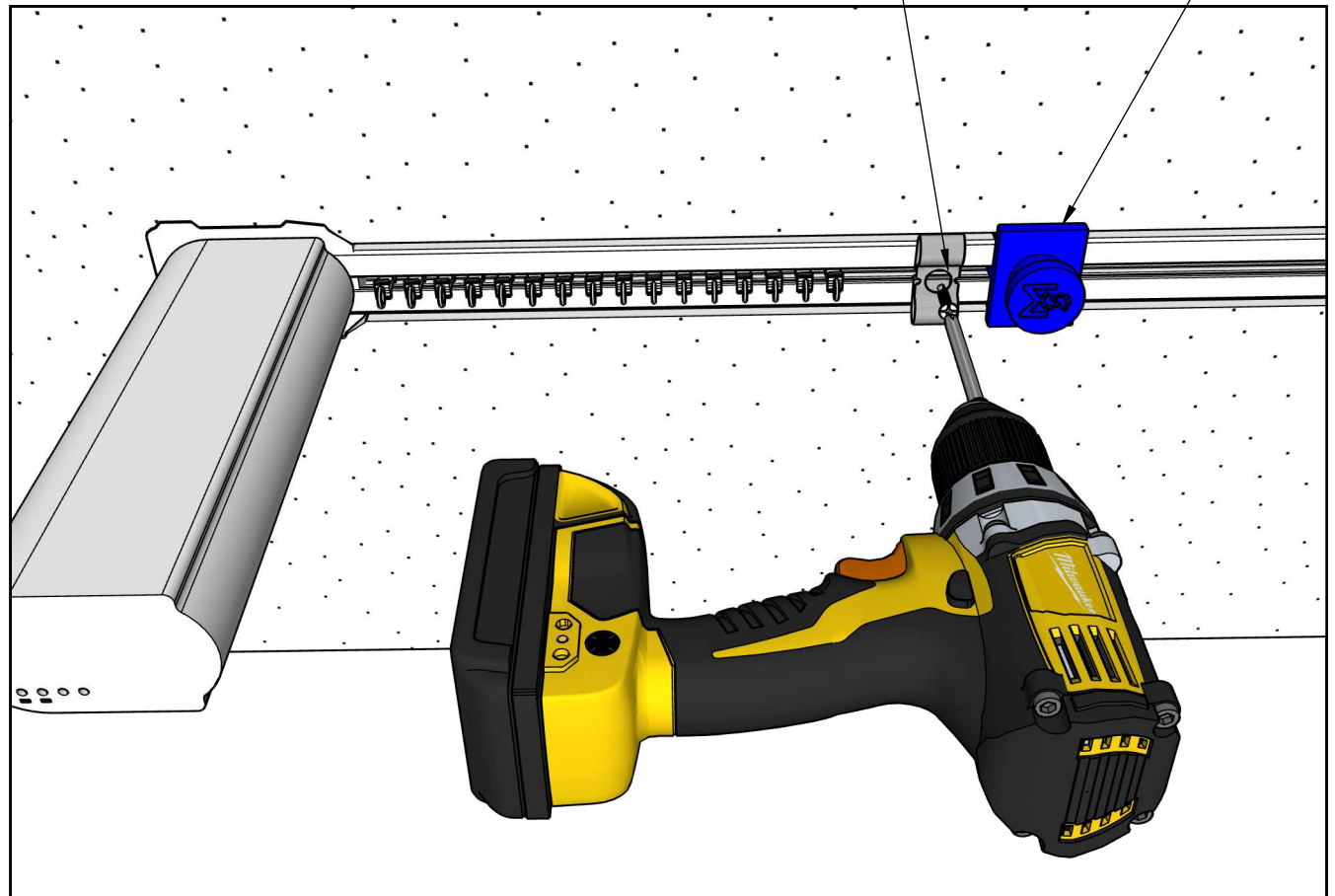
Step 9 - Install The Track

Install screw anchors.
Note that the screw heads
will go through the holes pre-drilled
in the track and catch the bracket.

Insert optional Track Centering Tool



Optional Centering Tool



Note: If your system will be wall to wall, have an inside corner, or be a tandem track, and you have not purchased the pre-configured specialty ends for your application, the mud lip will need to be trimmed flush to the cavity to allow the drapery system to reach the extents.

